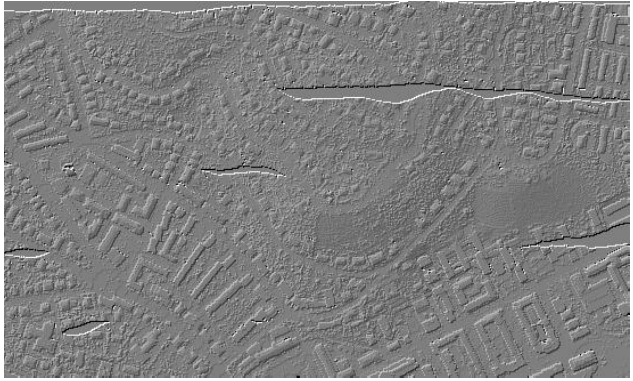
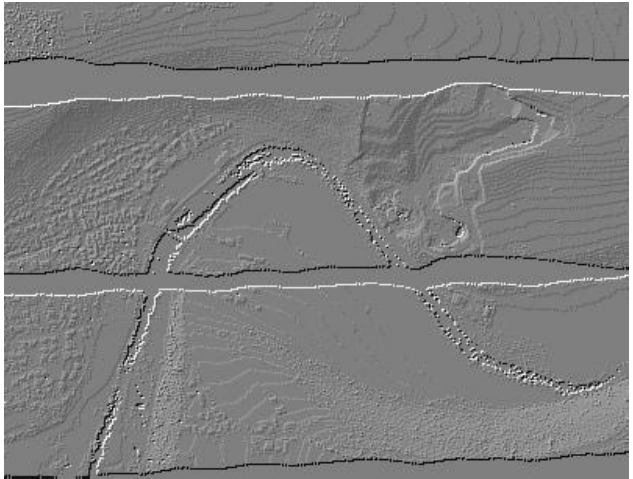


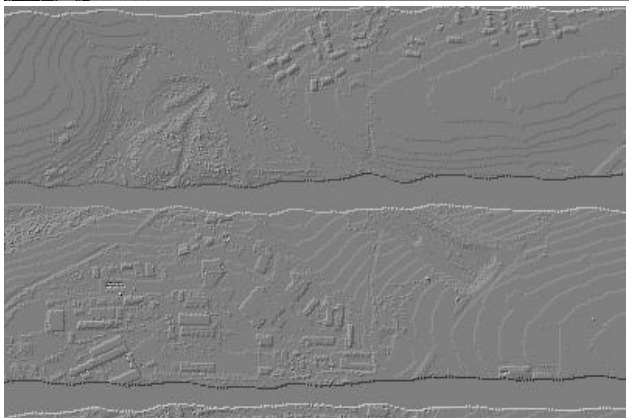
Appendix A – Data Sets



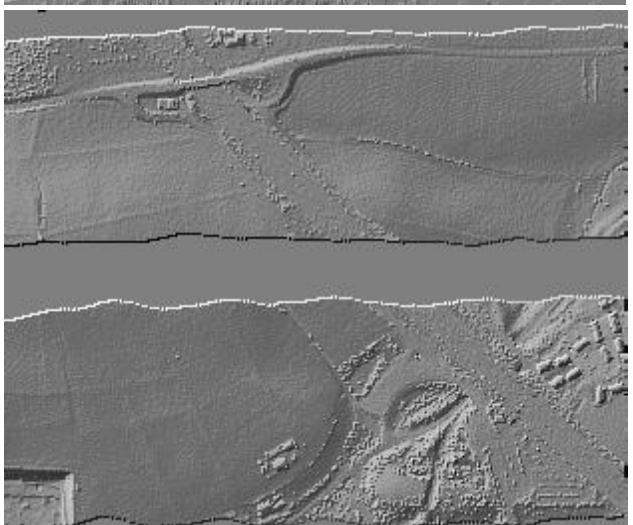
Site 1



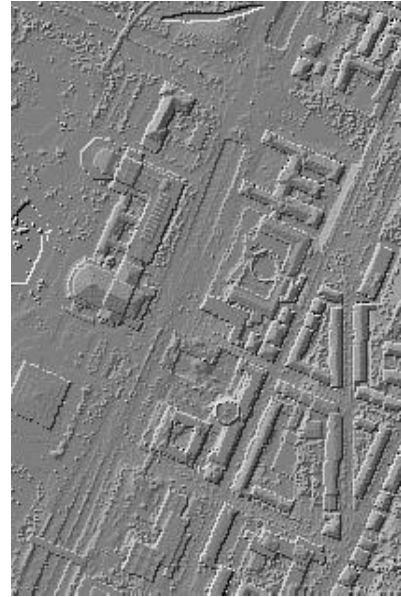
Site 5



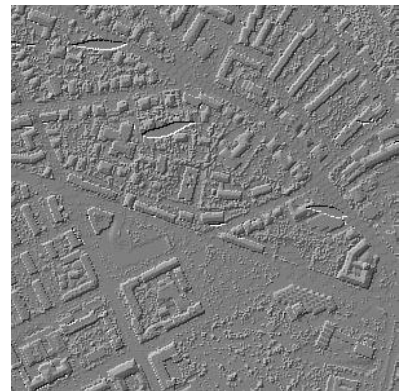
Site 6



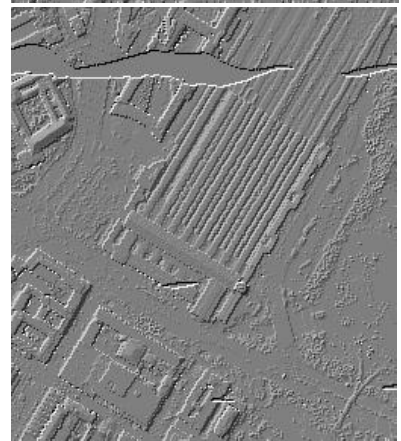
Site 7



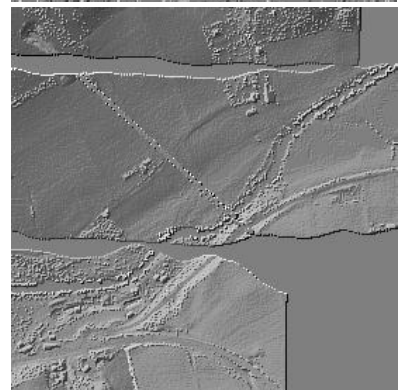
Site 2



Site 3



Site 4



Site 8

From the 8 data sets, 15 representative samples were extracted. The reason for the choice of the samples is given in the table below:

Test Data	Sample	Reason for choice (features of interest)
Site 1	Sample 11	Vegetation and buildings on steep slopes
	Sample 12	Small objects (cars)
Site 2	Sample 21	Narrow bridge
	Sample 22	Bridge (South west)/ Gangway (North East)
	Sample 23	Complex buildings, Large buildings, Disconnected terrain
	Sample 24	Ramp
Site 3	Sample 31	Disconnected terrain, Low point, Low point influence
Site 4	Sample 41	Clump of low points (Multi-path error)
	Sample 42	Elongated objects, Low (objects) and high frequency variation in the landscape
Site 5	Sample 51	Vegetation on slope
	Sample 52	Low vegetation, Discontinuity – sharp ridge
	Sample 53	Discontinuity preservation
	Sample 54	Low resolution buildings
Site 6	Sample 61	Discontinuity – sharp ridge, ditches
Site 7	Sample 71	Bridge, Discontinuity – preservation

The above samples are used in both the qualitative and quantitative comparisons. However, the qualitative comparison is not restricted to these samples alone.