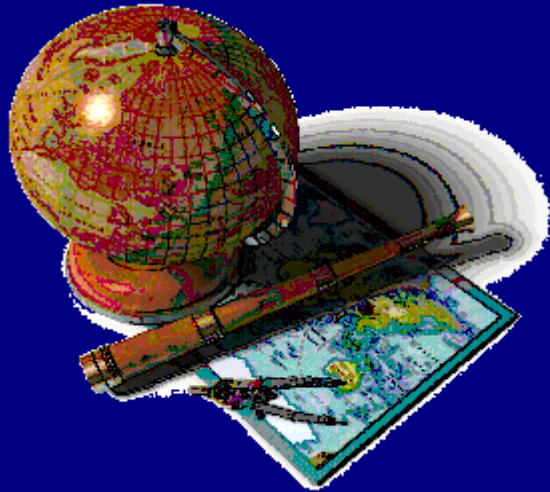


# The Importance of changes in land surveyors education



**András OSSKÓ**

**International Workshop**

**E-learning in the Geo-information Sciences and Land  
Administration**

**11-13 June 2008**

**Enschede, The Netherlands**

# CONTENT



- 🌐 - Introduction
- 🌐 - Changing priorities in the land surveyor profession
- 🌐 - FIG, UN organisations and World Bank recognition
- 🌐 - Importance of changes in the land surveyors education
- 🌐 - Lifelong learning in Land administration
- 🌐 - Conclusions

# Introduction



It's a world wide experience, especially in many developed countries, that the interest in the traditional land surveying profession has been decreasing during the recent years

In many technical universities the land surveying and geodesy faculties reduced capacity or closed down due to lack or small number of students

The measurement and computation have been highly automated for today and not necessarily need university education

The priorities in the wider land surveyor profession have been changed, the interest in land and real estate property related activities have been increased rapidly world wide





The roles of land administration matters have been changed during the recent decades, Land administration became one of the most important infrastructure for the economic growth and the implementation of sustainable development

Establishment, modernisation of land administration institutions is an increasing interest world wide

Land administration activities have been the part of the land surveyor profession since long time but it was not the most important field of the profession

Priorities in our profession have been continuously changing and the profession must answer the new challenges if land surveyors want to play important role, supporting the economy, in the future as well



To achieve these goals, land surveyors' education, especially at university level, must be changed, extended, according to the new requirements and students interest

Lifelong learning in land administration institutions is also an important issue

Universities should contact governmental institutions proposing education for the staff according to the new priorities



The lifelong learning is not an individual interest only but interest of the whole staff of land administration institutions



# Changing priorities in the land surveyor profession

The role of land and real estate properties in the economy has been changed since 1950s

Land and real estates haven't been properties only but commodities, generating income and profit

Investments in land and real estate properties have been continuously increasing world wide

Big commercial, residential, industrial investments require more financial support

Development, extension of mortgage market





Banks, investors requires security of ownership and mortgage

Fully operational legal and institutional framework is needed

Land administration and its institutions, especially cadastre and land registry can provide all of the services, facilities which guarantees the security of ownership and mortgages

Valuation, land management, planning and other land and real estate related activities are also essential parts of land administration



Development or modernisation of land administration institutions, especially cadastre and land registry is an increasing interest world wide to support the economic growth and implementation of sustainable development

To operate land administration institutions, more qualified professionals are needed and their knowledge must be extended

Land administration institutions are not administrative or engineering offices only, they provide different services, value added products for money to different players of the economy and citizens

The extended activities require business like approach, business plan, marketing and IT knowledge as well

New professionals, so called land professionals are needed especially at management level

These professionals have to be familiar with the traditional surveyor knowledge but also with legal, management, marketing and other knowledge

How can land surveyor students pick up these knowledge, by experience or by education

The answer is by both



# FIG, UN organizations and World Bank recognition

The International Federation of Surveyors, FIG, has recognised the changing priorities in the land surveyor profession few years ago and also the decreasing interest in the traditional land surveying by university students

FIG supports all fields of land surveying and the 10 commissions cover all of the activities of the profession

FIG intends to define the new extended roles of the land surveyor profession and this topic is one of the most important point in FIG professional strategy

The final aim, land surveyor profession, as general, should play an important role in the economy in the future as well



The logo for FIG (International Federation of Land Surveyors) consists of the letters 'FIG' in white on a red background.

FIG has also recognised, land administration activities, especially cadastre, land registry, land management are the most important areas of our profession today, required by the economy and the society



UN organisations-FAO, UN Habitat-, World Bank have also recognised the importance of land and real estate property related activities, looking for solutions, how possible is to create security tenure, ownership, mortgage to support the economy growth and the implementation of sustainable development in developing and transition countries as well



To achieve above goals UN organisations, World Bank and other national aid organisations support the development, modernisation of land administration institutions, especially cadastre and land registry world wide, expertise, financing projects



What is the reason of the increasing world wide interest to develop, modernising land administration?

The political, economic changes in many countries- former socialist countries, Soviet states, and the extremely rapid economic growth in China, India- require the development of fully operational, sustainable land administration institutions

In many countries there were no cadastre, land registry (former Soviet states) and they had to start from the beginning, developing of legal and institutional framework, implementation of the first registration of land and real estate properties and the first mass cadastral mapping



In other countries (majority of former Yugoslav states) there were no fully operational land administration institutions during the socialist period and these countries had to modernise institutions and update legal and cadastral mapping information of land and real estate properties.

To develop, run land administration system, sufficient number of well educated professional staff is needed at international and national level

FIG, UN organisations and World Bank established long term common strategy, developing working relation, organising joint events, workshops, in order to contribute to the final aims, improving the living conditions in the developing world, to reduce the poverty, accelerating the economic growth and implementation of sustainable development in every continents



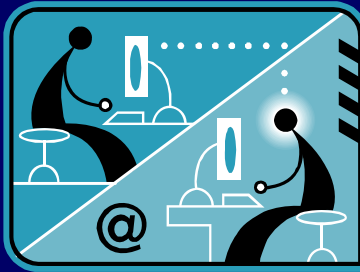
# The importance of changes in land surveyors education

As the world is changing, the world face new challenges to be solved, Implementation of sustainable development, accelerating economic growth, reduction of poverty in developing countries, etc.

Land and real estate properties and related activities play extremely important roles in the economy, supporting the achievement of above mentioned goals

The changing priorities also effect the priorities in different profession

The education, especially at higher level, must follow these changes, new priorities, required by the economy and the society



Quite frequently, the university education is conservative, very traditional, it would be good to find the balance between the practical and scientific approach

In the land surveyor education, universities have recognised immediately the importance of IT, extending the education with geo-information knowledge

As a result of this extended education, many of the qualified surveyors moved to IT fields

The increasing importance of land and real estate property related activities and the new role of land administration in the economy haven't been recognised by the majority of universities, running land surveying faculties



Many of the potential students are not interested in the traditional land surveying and mapping, and quite frequently, they couldn't find other subjects in the faculty, attractive and useful in practice

Advised to modify, extend land surveyors' education, introducing new subjects- legal knowledge, management, valuation, land development, etc.- broadening the knowledge of land surveyors

ITC in Enschede, UN supported University of Land administration opened in 2006



Hungary, Székesfehérvár, University of West Hungary, Land and Geo-information Knowledge Center opened at the end of 2007

# Lifelong learning in land administration



Lifelong learning, in general, an other important issue in all profession

Not individual interest only, but interest of professional groups, staff of governmental institutions

Land administration institutions staff require permanent education

Professional staff has to follow the new developments in the profession (IT, changing priorities)

Legal and land surveyor staff at Cadastre, land registry needs special knowledge which are not always subjects of the traditional university education

Technical universities should support lifelong learning for the staff of land administration institutions

Universities should extend their activities, contact land administration institutions, offering special courses, organised education, following the new priorities in our profession and technical development

Hungary, Székesfehérvár, the University of West Hungary,  
Faculty of Geo-informatics

long term contract with the government

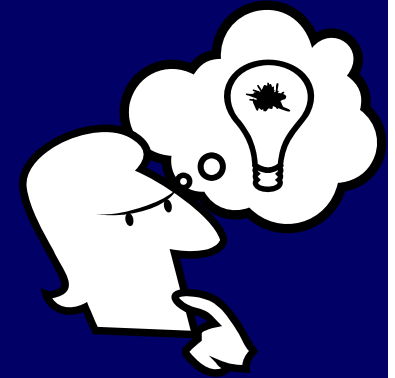
land registrar education (regular or correspondence courses)



**NYME**

Geoinformatikai Kar

# Conclusions



- ▶ the interest in the traditional land surveying is decreasing
- ▶ there are new priorities in our profession, the land and real estate property related activities are increasing interest world wide
- ▶ land administration is one of the most important infrastructure supporting the economic growth and the implementation of sustainable development
- ▶ university education for land surveyors must be modified, following new priorities in the profession, educate so called land professionals, required by the economy

# Conclusions

- ▶ FIG have recognised the new priorities in the land surveying profession, looking for solution to define the new important roles of land surveyors in the future as well, supporting the economy in every countries
- ▶ UN organisations and World Bank support the development of land administration sector world wide. To operate land administration institutions, sufficient number of well educated professional staff is needed. Universities should support this trend with some changes in education of land surveyors
- ▶ Besides of regular education, universities should offer, provide organised special courses for land administration institutions, based on contract agreement with the government aiming to support lifelong learning for the staff of land administration institutions

**Thank you very much for  
your attention !**