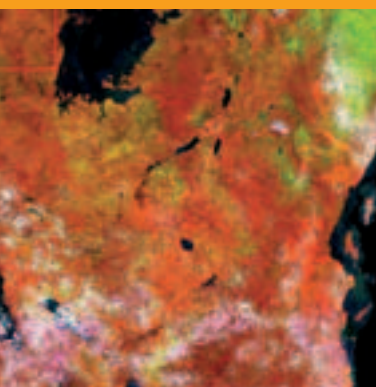




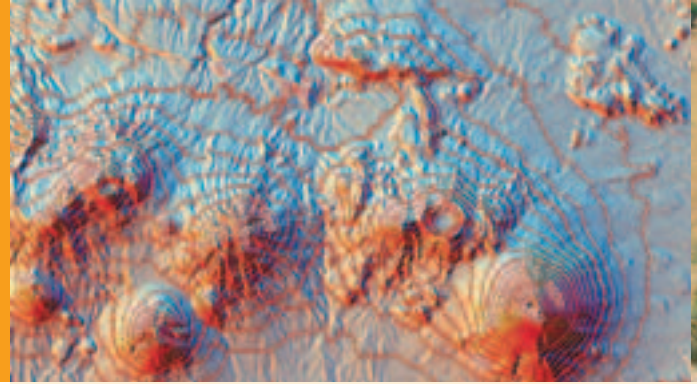
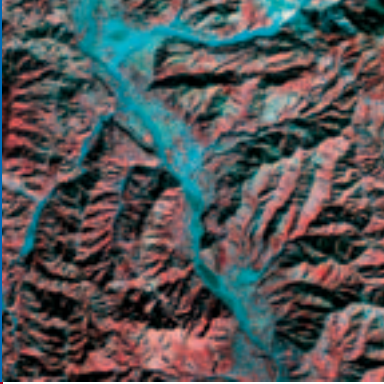
Project Services

Project Services
Tailored to the needs of our clients



ITC

INTERNATIONAL INSTITUTE FOR GEO-INFORMATION SCIENCE AND EARTH OBSERVATION



What's ITC all about?

With more than 50 years of experience, the International Institute for Geo-Information Science and Earth Observation (ITC) is the world's most widely recognised international institute of higher education in its field. Through education, research and project services, ITC contributes to capacity building in developing countries and countries in transition. Specialising in the development and application of remote sensing tools and geographical information systems (GIS), ITC experts play an active role in such initiatives as determining landslide risks, mapping forest fires, implementing land administration systems, designing wildlife management systems and detecting environmental pollution.

ITC is based in Enschede, the Netherlands.

BRIDGE project

Recognising the growing demand for English-speaking experts in interdisciplinary civil and sustainable geo-system engineering and exploration in the Mekong region, this three-year project aims to develop human resources at Vietnam National University (VNU) and the National University of Laos (NUOL) to enable these institutions to initiate their own international programmes in this field. The project focuses on both strengthening the technical and academic skills and improving the managerial skills of VNU and NUOL staff. Project partners are VNU, NUOL, the Asian Institute of Technology (Thailand) and Stockholm University, with ITC as the lead partner.



EAGLE research

The EAGLE project is a specific targeted research project financed by the EU-FP6 programme. Nowadays, a new generation of global imaging spectroradiometers capable of acquiring simultaneous multi-angle observations are found onboard several satellites (e.g. AATSR-ENVISAT and ATSR2-ERS). Remote sensing approaches using wide field-of-view scanners such as the AVHRR-NOAA have often obviated the angular dependence of reflected and emitted radiation. New approaches and improved accuracy are achievable thanks to the new generation of sensors. ITC is one of five partners in the research group led by the University of Valencia, Spain.

International education

More than 17,000 students from over 165 countries have followed ITC courses since 1950. ITC offers educational programmes with different specialisations centred on the application of remote sensing tools and geo-information systems. These programmes lead to Postgraduate diplomas and Master, Master of Science (MSc) and PhD degrees. The Institute also offers shorter diploma and certificate courses, as well as tailor-made courses.

ITC's educational programmes primarily address young and mid-career professionals that can potentially influence decision-making processes within their organisations. A substantial part of ITC's educational portfolio is offered in the form of joint programmes with partners in Africa, Asia, Latin America and Europe. Furthermore, a number of courses are given in distance mode.

Fields of expertise

ITC's multidisciplinary and problem-oriented approach focuses on the use and provision of geo-information and earth observation in such application fields as:

- urban planning
- land administration
- disaster management
- strengthening civil society
- water management
- earth sciences
- environmental management and biodiversity
- food security and land degradation.



ITC and the United Nations University

On 4 April 2005, the United Nations University (UNU) and ITC entered into an agreement appointing ITC an associated institution of UNU. The UNU mission, which is "to contribute, through research and capacity building, to efforts to resolve the pressing global problems that are the concern of the United Nations, its Peoples and Member States" (<http://www.unu.edu/unu.html>), is very much in line with ITC's mission. Through this agreement, ITC is linked to a network of academic institutes and scholars that form a think-tank for the UN system and pursue capacity building, particularly in developing countries.

The aim of the UNU-ITC agreement is to develop and carry out joint programmes on capacity building in disaster management and in land administration, and to disseminate knowledge of these and directly related issues. ITC will substantially increase its project services in disaster geo-information management and in land administration in the coming years.

ITC's clients and partners

Through its project activities, ITC actively contributes to implementing the goals and objectives formulated by all major multilateral and bilateral donor agencies (e.g. the UN Millennium Development Goals).

Over the years, ITC has built up a large clientele in Asia, Latin America, Africa, Europe and the Middle East, which includes:

- local, regional and national governments
- national survey organisations
- universities and research organisations
- national and international NGOs
- UN organisations and other multilateral organisations (e.g. European Space Agency)
- bilateral donor agencies (e.g. Dutch Ministry of Foreign Affairs and GTZ, Germany)
- international financing organisations (e.g. World Bank and European Union)
- private sector organisations (e.g. engineering companies and mineral exploration companies).

When it comes to executing large-scale projects, ITC is often part of a consortium of project partners. ITC maintains a network of partners with whom it regularly teams up to acquire and implement projects. ITC's project partners include:

- Asian Disaster Preparedness Centre (ADPC), Thailand
- International Centre for Integrated Mountain Development (ICIMOD), Nepal
- International Water Management Institute (IWMI)
- Centre for Environment, Agriculture and Development (CEAD), South Africa
- Regional Centre for Mapping of Resources for Development (RCMRD), Kenya
- Universidad Nacional Autónoma de México (UNAM), Mexico
- Dutch Cadastre
- Dutch engineering consultants (e.g. DHV and Royal Haskoning)
- Dutch universities (e.g. Wageningen University, University of Twente and University of Utrecht).





Picture © Gerard Kuster

International Institute for Geo-Information Science and Earth Observation (ITC)

P.O. Box 6
7500 AA Enschede
The Netherlands
Phone: +31 53 487 44 44
Fax: +31 53 487 44 00
Email: pr@itc.nl
www.itc.nl

For more information on ITC's Project Services, please contact:

Bureau Marketing and Project Services
Office Hours: 9:00 am - 17:00 (Central European Time) Monday to Friday
Phone: +31 53 487 43 55
Fax: +31 53 487 44 36
Email: mps@itc.nl

More detailed information on our projects can be found on our web pages at:
www.itc.nl/projects



ITC

INTERNATIONAL INSTITUTE FOR GEO-INFORMATION SCIENCE AND EARTH OBSERVATION